

ISSUE TWO



RUBBERLOC[®]

Quality at a Reasonable Price



TREE TIES AND SUPPORTS



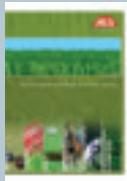
www.rubberloc.co.uk

CONTENTS

2

Technical Details	3
Belting	4-5
Spacer Sleeves & Collars	6
Blocks	7-8
Buckle Tree Ties	9
Stakes	10
Staking Methods	11-13
Nursery Support Systems	14-15
Rubberloc Usage Chart	16

**Other ALS Catalogues Available:
ALS Turf Management
Planting, Forestry & Landscaping**



For additional information on our range of **Rubberloc**[®] products or ALS Planting, Forestry and Landscaping products please phone our sales office on **01952 641949** or e-mail: sales@amenity.co.uk

TECHNICAL DETAILS

The Rubberloc® range of tree ties, blocks and belting is made out of the best quality E.P.D.M. rubber material available with design features that make it superior to competing tree support products. In use for many years Rubberloc® has a name for reliability

- High quality E.P.D.M. polymer and fillers ensure long life in all weather and temperature conditions.
- Products remain soft, flexible, yet strong even at low temperatures.
- Reinforced, laminated rubber ties and belting offers exceptional strength and resists tearing from nail holes, etc.
- Anti-slip design of belting and ties improves grip and prevents slipping.
- Foldback buckle design is extremely quick and easy to re-adjust as trees grow yet totally prevents slippage.
- Rubber pads and belting are kinder to tree bark than other products.
- Belt slots in blocks have rounded corners which prevents fracturing.
- Universal curve on blocks fits all trees.
- Nail holes through blocks speeds nailing and hold nails while hammering. Saves crushed thumbs!
- Large choice of blocks in flat to round profiles, round to round profiles and standard or extra thick spacing.
- Large choice of buckle ties in widths of 14mm, 24mm and 35mm and varying lengths to suit any needs.
- Standard or heavy-duty reinforced laminated belting available for standard or extra heavy-duty applications. Very high breaking strains compared to alternative products in PVC, etc.
- Stretch rubber belting available to suit low maintenance and lower stress planting situations.
- Spacers available in any lengths to order for twin and treble stake support systems.
- Unique wire mounted block and tie in two sizes for tree nurseries growing trees in wire supported rows.

Apart from the obvious question of cost, selecting the best system will depend on a number of factors including:

1. Location – Windswept or sheltered? “Prestige” site? Subject to vandalism?
2. Bare Root or container grown trees.
3. Tree size at planting.
4. Maintenance after planting.
5. Reputation – will cutting corners be justified long term?

The following might throw some light of what can be an unnecessarily complicated subject.

Rubber Or Plastic?

Both materials are compounds i.e. they contain more than one ingredient. The basic ingredients are polymers, fillers and various chemicals. When designing or selecting a compound, it is necessary to determine the required physical and chemical properties that the finished article requires, as well as bearing in mind the final price.

Plastic

(usually Polythene or P.V.C.)

Is very long-lasting and un-reinforced versions have the ability to stretch as the tree grows. It is also reasonably strong with typical 25mm wide belt having breaking strain of around 70kg. On the debit side, it is likely to harden and become more brittle in very cold weather and any accidental damage can quickly extend across the width of the belt.

Reinforced Rubber

Reinforced rubber is stronger with a breaking strain of around 110kg at 24mm wide. Because rubber is resilient, it provides a kinder surface against the tree bark. The correct compound will provide a useful life in excess of eight years and remain flexible down to -25°C . On the debit side, because the belt will stretch only slightly, adjustments are necessary from time to time unless the designer has made provisions for this – see below.

Stretch Rubber

While not having the same load capacity as our fabric reinforced belting, stretch rubber belting has a load capacity quite adequate for small trees up to 3cm in diameter or 10cm in girth. Its big advantage is that it allows the tree to expand without adjustment until the tree is self-supporting without damage or restriction. Please see below.



Annual adjustment of buckle ties or our stretch rubber belting (UR1 & UR2) will avoid this damage!



BELTING

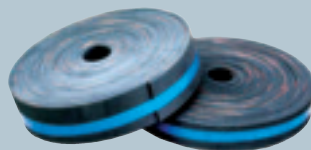
5

Standard Belting



Our standard belt consists of a square woven nylon fabric coated with a very durable rubber, providing a total thickness of 2mm.

The surface has a genuine anti-slip feature to minimise any movement against the bark. At 24mm wide, the breaking strain is 110kg.



Code	Belting Material	Length	Width	Thick	Each	10+	50+	100+
S0	Reinforced Rubber	10m	14mm	2mm	£6.96	£5.94	£4.74	£3.54
S1	Reinforced Rubber	10m	24mm	2mm	£8.41	£7.94	£6.00	£5.11
S2	Reinforced Rubber	10m	35mm	2mm	£10.51	£9.43	£8.41	£7.21

Heavy Duty Belting



The heavy-duty belting has an even stronger fabric and a thicker coating of rubber, providing an overall minimum thickness of 3mm. At 24mm, wide breaking strain is 200kg.



Code	Belting Material	Length	Width	Thick	Each	10+	50+	100+
H2A	HD Reinforced Rubber	10m	35mm	3mm	£14.41	£13.21	£11.96	£9.91
H3A	HD Reinforced Rubber	10m	50mm	3mm	£19.22	£16.21	£15.02	£12.07

Stretch Rubber Belting



While not having the same load capacity as our fabric reinforced belting, stretch rubber belting has a load capacity quite adequate for small trees up to 3cm in diameter or 10cm in girth. Its

big advantage is that it allows the tree to expand without adjustment until the tree is self-supporting without damage or restriction.



Code	Belting Material	Length	Width	Thick	Each	10+	50+	100+
UR1	Stretch Rubber	10m	24mm	4mm	£11.06	£9.91	£8.71	£8.28
UR2	Stretch Rubber	10m	35mm	4mm	£16.21	£12.61	£11.41	£10.21

SPACER SLEEVES & COLLARS

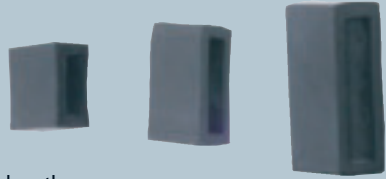
6

Spacers



These are low-cost but are an effective alternative to slotted blocks. The rubber is E.P.D.M, which is widely used as insulation on motor vehicles because of its excellent weather-resistant properties.

We can supply this material to any required length.



Code	Spacer Collars	Length	Ext	Int	For	Each	100+	500+	1000+
SP0	EPDM rubber	15mm	15mm	7mm	S0	£0.09	£0.08	£0.07	£0.06
SP1	EPDM rubber	15mm	27mm	7mm	S1	£0.10	£0.09	£0.08	£0.07
SP2	EPDM rubber	20mm	40mm	10mm	S2	£0.17	£0.13	£0.12	£0.11

Code	Spacer Sleeves	Length	Ext	Int	For	Each	100+	500+	1000+
SP1A	EPDM rubber	30cm	27mm	7mm	S1 belt	£0.87	£0.80	£0.76	£0.73
SP2A	EPDM rubber	30cm	40mm	10mm	S2 or H2A	£1.07	£1.01	£0.94	£0.89
	EPDM rubber	90cm	40mm	10mm	S2 or H2A	£3.04	£2.71	£2.51	£2.39

Spacers (Collars) or Blocks (Pads)



A block will cost around five times as much as a spacer and it is as well to give some thought to their respective merits and drawbacks. A block will hold the tree firmly to the stake and prevent lateral movement, but because the tree is locked firmly at the point of tie, slackening of the belt is occasionally necessary. Contrary to popular belief, rubber (unless it's sponge) will not compress. Although its shape can alter under load. A strong rubber spacer will stretch as the tree grows and belt slackening is hardly necessary, but some lateral movement of the tree can occur. The ideal combination for the smaller tree, where maintenance is required to be minimal and cost is not critical, is a block with an all-rubber stretch belt (UR1 & UR2). A close second (and cheaper) is a reinforced belt and a good rubber spacer.

BLOCKS

All our blocks have holes in the centre section that have been pre-punched to aid holding the nail in place when securing the block to the stake or cross bar, this helps you protect your fingers!



AP1 – Universal Block
Unslotted (55mm x 45mm)
Min Depth 8mm



Unslotted SBS3A – 37mm
(65mm x 50mm) Min Depth 15mm



SBS5
Unslotted (85mm x 65mm)
Min Depth 11mm



SBS6
Unslotted (150mm x 90mm)
Min Depth 15mm



SBR1 – 25mm
Standard (50mm x 35mm)
Min Depth – 10mm



SBR2 – 25mm
Thick (50mm x 35mm)
Min Depth 20mm



SBR3 – 37mm
Standard (65mm x 50mm)
Min Depth 15mm



SBR4 – 37mm
Thick (65mm x 50mm)
Min Depth 25mm



SBS1 – 25mm
Standard (50mm x 35mm)
Min Depth 10mm



SBS2 – 25mm
Thick (50mm x 35mm)
Min Depth 20mm



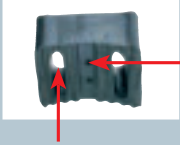
SBS3 – 37mm
Standard (65mm x 50mm)
Min Depth 15mm



SBS4
Thick (65mm x 50mm)
Min Depth 25mm

Code	Blocks (Slotted for belts with nail holes)	Width	Min Depth	For	Each	100+	500+	1000+
SBR1	Double rounded std	50mm	10mm	UR1/S1 Belt	£0.54	£0.44	£0.43	£0.42
SBR2	Double rounded thick	50mm	20mm	UR1/S1 Belt	£0.92	£0.80	£0.76	£0.72
SBR3	Double rounded std	65mm	15mm	UR2/ S2/ H2A Belt	£0.99	£0.90	£0.78	£0.76
SBR4	Double rounded thick	65mm	25mm	UR2/ S2/ H2A Belt	£1.48	£1.53	£1.42	£1.39
SBS1	Flat/ back/ std	50mm	10mm	UR1/S1 Belt	£0.60	£0.57	£0.56	£0.53
SBS2	Flat/ back/ thick	50mm	20mm	UR1/S1 Belt	£0.82	£0.77	£0.70	£0.59
SBS3	Flat/ back/ std	65mm	15mm	UR2/ S2/ H2A Belt	£0.92	£0.91	£0.89	£0.86
SBS4	Flat/ back/ thick	65mm	25mm	UR2/ S2/ H2A Belt	£1.07	£1.02	£0.98	£0.91
Code	Blocks (Unslotted/nailed)	Width	Height	For	Each	100+	500+	1000+
AP1	Universal	55mm	45mm	UR1/ UR2/ S1/ S2/ H2A	£0.57	£0.54	£0.49	£0.44
SBS3A	Flat back	65mm	50mm	S2/ H2A/ H3A	£0.82	£0.76	£0.64	£0.57
SBS5	Flat back	85mm	65mm	S2/ H2A/ H3A	£2.21	£2.11	£1.98	£1.90
SBS6	Flat back	150mm	90mm	S2/ H2A/ H3A	£3.91	£POA	£POA	£POA

What Makes Rubberloc Blocks So Special?



Nail holes
to save your
fingers

Rounded belt slots to
prevent fracturing

Include:

- E.P.D.M is again used, and the design features
- Rounded slot corners to prevent premature splitting.
- Wider curvature on bearing surfaces.
- Nail holes right through block for ease of fitment.

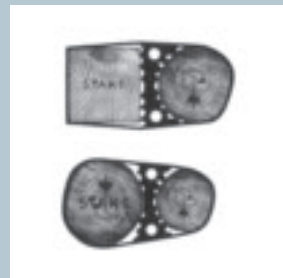
AP1 Universal Block

A traditional competitive product will have been moulded, usually from a low grade rubber, to keep the cost down. Almost always, the rubber is hard – indicating a low percentage of rubber (polymer) in the mixture. The AP1 Universal Block is completely the opposite. It is manufactured using a high quality flexible compound:

1. Slots reduce the size of the tree that the block can used for i.e. the tree diameter should not exceed the distance between the slots.
2. Once the block is fitted and the belt finger tight, the tree is immediately restricted at that point. As the tree grows, and unless the belt is regularly slackened, a groove is cut into the trunk – often leading to the top half of the tree parting from its base. (See picture on page 4)

This all-purpose block which incidentally can take the place of four of our traditional blocks, goes a long way to ensuring that damage to the tree is minimised.

- a) We have used a high quality, flexible compound.
- b) The shoulder area is hollowed out to allow for tree growth.
- c) The design caters for tree girths up to 14cm.
- d) Because of its flexibility, it is suitable for round or square stakes.
- e) Extensive tests have shown that fitting the belt around the block (not through slots) is effective.

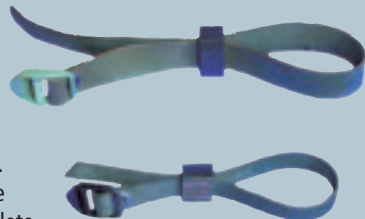


BUCKLE TREE TIES

Complete Buckled Ties



Rubberloc® Buckle tree ties are manufactured from a woven nylon webbing, covered with a recycled rubber coating that is very durable and a genuine anti-slip feature to minimise any movement. Remains pliable at all temperatures. **Rubberloc®** Buckle tree ties range from 300mm to 600mm. The nylon buckles are securely fixed with a brass rivet & come complete with a rubber spacer. The advantages of a buckle tree tie are:-



1. The tie is quicker to apply (time is money).
2. Belt slackening is much easier without damage to the tie.

Code	Tree Ties inc collar	Width	Length	100+	500+	1000
T1530	Reinforced rubber tie	14mm	30cm/ 12"	£0.34	£0.32	£0.30
T1538	Reinforced rubber tie	14mm	38cm/ 15"	£0.39	£0.34	£0.32
T1545	Reinforced rubber tie	14mm	45cm/ 18"	£0.41	£0.39	£0.34
T2538	Reinforced rubber tie	24mm	38cm/ 15"	£0.57	£0.47	£0.42
T2545	Reinforced rubber tie	24mm	45cm/ 18"	£0.63	£0.57	£0.53
T2560	Reinforced rubber tie	24mm	60cm/ 24"	£0.74	£0.63	£0.56
T3745	Reinforced rubber tie	35mm	45cm/ 18"	£0.89	£0.79	£0.76
T3760	Reinforced rubber tie	35mm	60cm/ 24"	£1.02	£0.92	£0.88

Note: As manufacturers we can supply any length of buckle tie you may require. Please ring for further information.



TREE STAKES

10

Tree Stakes

ALS can provide any size tree stakes that our customers require. We also supply square stakes which are used for whips or to support tree guards. Delivery charges may apply, please ask when ordering.

Machine Rounded, Pointed and Pressure Treated Timber Stakes

Product Code	Length	Diameter	1-99	100+	500+	1000+
721STAKE0925	4ft/1.2m	2"/50mm	£1.54	£1.10	£0.93	£0.89
721STAKE0920	5ft 6"/1.65m	3"/75mm	£2.00	£1.88	£1.66	£1.54
721STAKE0921	6ft/1.8m	3"/75mm	£2.17	£2.06	£1.82	£1.71
721STAKE0922	8ft/2.4m	3"/75mm	£3.43	£3.32	£3.10	£2.52
721STAKE0923	8ft/2.4m	4"/100mm	£5.17	£4.72	£4.39	£3.83



Cross Bars

Cross-Bar Prices for Two Stakes and Flat Back Blocks System

Product Code	Length	Diameter	1-99	100+	500+	1000+
721CROSS0550	1m	4"x 1.5" / 100mm x 38mm	£1.56	£1.39	£1.20	£1.09

Tree Shelter Stakes

Tree Shelter Stakes - Treated Softwood Stakes, Pointed and ideal for Tree Shelters and Plastic Mesh Guard Support. Delivery charges may apply, please ask when ordering.

Product Code	Length	Diameter	1-99	100+	500+	1000+
721STAKE0050	75cm	25mm x 25mm	£0.29	£0.27	£0.24	£0.23
721STAKE0150	90cm	25mm x 25mm	£0.36	£0.31	£0.29	£0.27
721STAKE0200	90cm	32mm x 32mm	£0.56	£0.51	£0.48	£0.40
721STAKE0250	1.2m	25mm x 25mm	£0.51	£0.46	£0.40	£0.38
721STAKE0300	1.2m	32mm x 32mm	£0.81	£0.70	£0.59	£0.49
721STAKE0400	1.5m	32mm x 32mm	£1.02	£0.99	£0.96	£0.92



Post Driver

The double handed post driver has a 5" or 6" diameter tube and is suitable for tree stakes or fencing post erection.

720STAKE0500	5" Diameter Post Driver	£55.33
720STAKE0550	6" Diameter Post Driver	£60.55



STAKING METHODS

Single Stake Method



This system is best suited for feathered up to standard trees. The durable and genuine anti-slip nature of this tie along with a pliable spacer and robust buckle makes for ease of adjustment as tree grows.

Items required

1 x Buckle Tree Tie which comes complete with spacer available in various sizes. Lengths and widths of ties are dependent on tree size please see page 9 for available sizes.

1 x Stake – please see page 10.

For Larger trees

1 x 24mm or 35mm wide length of rubber belting (S1 or S2.)

1 x 25mm or 37mm spacer or block - please see pages 6 & 7.

1 x Stake – please see page 10.

OR

1 x Universal Block AP1.

1 x Stake – please see please see page 10.

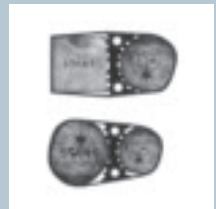
1 x Buckle Tree Tie available in various sizes. Lengths and widths of ties are dependent on tree size please see our **Rubberloc**® usage chart.

OR

1 x Universal Block AP1.

1 x 1 x 24mm or 35mm wide length of rubber belting product code S1, S2 or for heavy use H2A, H3A).

3 x Clout nails (available per kilo 720nail0500).



Multiple Stake Method



Where two or three stakes are used, position the stakes outside the root ball an equal distance from the tree trunk (usually approx. 30cm).

Take a length of belting, then thread this through the spacer sleeve and around the trunk and back through the spacer sleeve. Finish by securing the belting to the stake by nailing. Please note we can manufacturer any length of spacer sleeve that you may require.

Items required for Double Stake and Tie Method

2 x Stakes (Machine Rounded) - please see page 10.

2 x Length of belting – (taken from a 10m roll of rubber belting available in either 24mm or 35mm product code S1, S2).

2 x Spacer sleeves – 40mm internal diameter and a standard length 30cm product code SP2A (Please ask for alternative lengths).

4 x Clout nails (available per kilo 720nail0500).

STAKING METHODS

12



Items required for Triple Stake and Tie Method

3 x Stakes (Machine Rounded) - please see page 10.

3 x Length of belting – (taken from a 10m roll of rubber belting available in either 24mm or 35mm product code S1, S2).

3 x Spacer sleeves – 40mm internal diameter and a standard length 30cm product code SP2A (Please ask for alternative lengths).

6 x Clout nails (available per kilo 720nail0500).

Stake & Cross Bar Methods

This system employs a wooden cross-bar to which the tree is attached using a rubber flat back block between tree and bar and then holding the tree in place by nailing the belt over the tree trunk and against the bar. Provided the belt is regularly removed and re-nailed, the system is safe and effective.



STAKING METHODS

13

Double Stake & Cross Bar Tie Method



Items required

1 x Cross Bar - please see page 10.

2 x Stakes (Machine Rounded) - please see page 10.

1 x Length of belting – (taken from a 10m roll of rubber belting available in either 24mm or 35mm product code S1, S2 for heavy use H2A, H3A).

1 x Flat Back Block without slots – available in 25mm and 37mm (AP1 for standard trees and SBS3A, SBS5 or SBS6 for larger trees).

Items required

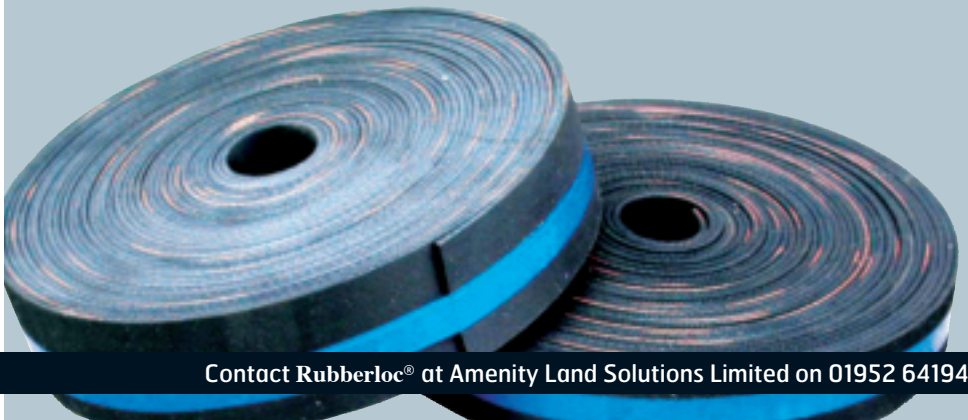
2 x Stakes (Machine Rounded) - please see page 10.

1 x Cross Bar - please see page 10.

1 x Length of belting – (taken from a 10m roll of rubber belting available in either 24mm or 35mm product code S1, S2).

6 x Clout nails (available per kilo 720nail0500).

1 x Flat Back Block with slots – available in 25mm and 37mm product codes SBS1, SBS2, SBS3 and SBS4.



NURSERY SUPPORT SYSTEMS

14

Wire Mounted Tree Supports



The Wire and Support System has been designed in conjunction with one of the UK's largest container tree nurseries.

This system has been designed to:

- Secure & protect trees from damage by wires.
- Allow placing or removal of new trees.
- Be kinder to the tree with softer rubber pads.
- Have an easily adjustable buckle allowing for tree girth growth.
- Be strong, durable and ultra violet light resistant.
- Be easily positioned at any point on the support wire by using a medium gauge tying wire.



This unique wire system is economical and durable and is available in two different sizes.

- BAR 1 tie standard buckle 35mm x 38cm long.
- BAR 2 tie locking buckle 35mm x 38cm long.
- Baby BAR 3 tie 24mm x 38cm long.



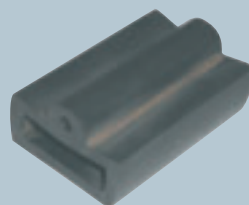
Bar 1



Bar 2



Bar 3



Pad

NURSERY SUPPORT SYSTEMS

15

Wire Support System

Items required

Wire Support System – for container trees in nurseries or garden centres

1 x BAR1 (Standard buckle 35mm) or BAR2 (Locking Buckle 35mm) BAR 1 and BAR 2 come complete with pad.

OR

1 x BAR 3 smaller version of the above for smaller trees with 24mm belting with locking buckle.

1 x Length of tying wire to position and attach to straining wire (Not included in the price).

1 x Tying wire twister.

Code	Wire mounted tree supports with pad and buckle tie	1-99	100+	500+	1000+
BAR1	Wire support tie - Standard buckle 35mm wide 38cm long	£1.33	£1.19	£1.12	£1.06
BAR2	Wire support tie - Locking buckle 35mm wide 38cm long	£1.46	£1.36	£1.28	£1.20
BAR3	Baby wire support tie - Locking buckle 24mm wide 38cm long	£1.00	£0.91	£0.86	£0.80



Continuous Cross Bar System

This system is an alternative to wire support. It can be used with containerised trees where a wooden cross bar is used in a continuous line to replace the wire system. The flat back block and tie is secured to the cross bar where the trees can be supported, once again the ties used are the same as the wire support system. However the pad is replaced by the flat back block.



Items required

1 x Flat Back Block SBS6, SBS5, SBS3 or SBS3A (dependent on the size of the tree please see Rubberloc Usage Chart)

1 x Buckle Tie Bar 1 or Bar 3 (again dependent on the size of the tree)

RUBBERLOC USAGE CHART

LIGHT STANDARD 2.0-2.5M 6-8CM	STANDARD 2.5-3M 8-10CM	SELECTED STANDARD 3-3.5M 10-12CM	HEAVY STANDARD 3.5-4.25M 12-14CM	EX.HEAVY STANDARD 4.25-6M 14-16CM	EX.HEAVY STANDARD 6-6.5M 16-18CM	EX.HEAVY STANDARD 6.5-8.5M 18-20CM
-------------------------------------	------------------------------	--	--	---	--	--

Belting

S1	•	•	•			
S2			•	•	•	
H2A				•	•	•
H3A				•		•
UR1	•	•	•			
UR2			•	•		

Spacers

SPO	•					
SP1	•	•	•			
SP2			•	•	•	•
SP1A		•				
SP2A				•	•	•
AP1	•	•				

Blocks

SBR1	•	•	•			
SBR2			•			
SBR3			•	•		
SBR4				•	•	
SBS1	•	•	•			
SBS2		•	•			
SBS3			•	•		
SBS3A			•	•		
SBS4				•	•	
SBS5				•	•	•
SBS6					•	•

Ties

T1530	•					
T1538	•					
T1545	•					
T2538	•	•	•			
T2545	•	•	•	•		
T2560			•	•		
T3745			•	•		
T3760			•	•		



Amenity Land Solutions Ltd

Units 2/3, Allscott, Telford, TF6 5DY

T +44(0)1952 641949

F +44(0)1952 247369

E sales@amenity.co.uk

W www.rubberloc.co.uk